

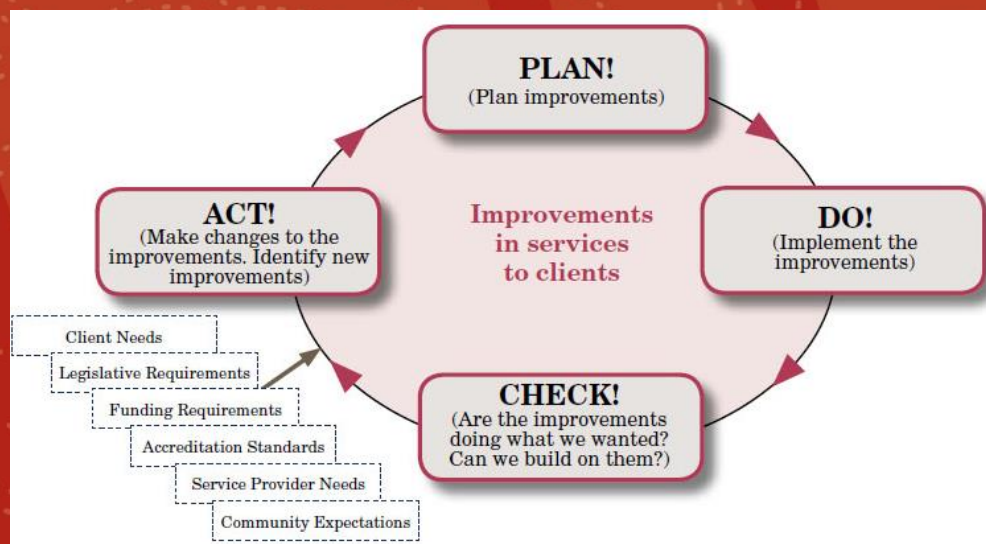
Data for Ear Health CQI



Jessica Leonard

Public Health Medical Registrar

Plan – Do – Study/Check – Act cycle



- http://www.health.gov.au/internet/publications/publishing.nsf/Content/oatish-accreditation-manual_toc~sn1%3Aterms_definitions~cont-qty-improvement

Usefulness of data

- For planning purposes and evaluation purposes
- Activity based information and Ear Health information
- Preliminary indicator set and future possibilities
- Possible future indicators include follow up timing, care plans

Service/system indicators

1. Number of ear health checks conducted in 0-14 year olds, by 5-year age group
2. Number of otoscopies recorded in 0-14 year olds, by 5-year age group
 - 2a) Total otoscopies
 - 2b) Otcoscopies as a proportion of total presentations of 0-14 year-olds to the clinic
3. Number of patients with an outstanding automated recall for ear health check-up

Ear and Hearing Health indicators

4. Findings on otoscopy qualifiers recorded for clients aged 0-14 years
5. Patients with a diagnosis of middle ear disease recorded, by 5 year age group and sex
 - 5a) Acute Otitis Media (without perforation)
 - 5b) Suppurative Otitis Media (includes AOM with perforation, CSOM)
 - 5c) Otitis Media with Effusion

Improvements

- Challenges – this information must be extracted from Communicare, not an automated process at the moment (distinct from e.g. pathology test results reported from an external provider)
- Data quality relies upon information entered and consistent documentation – same finding, same way, all staff

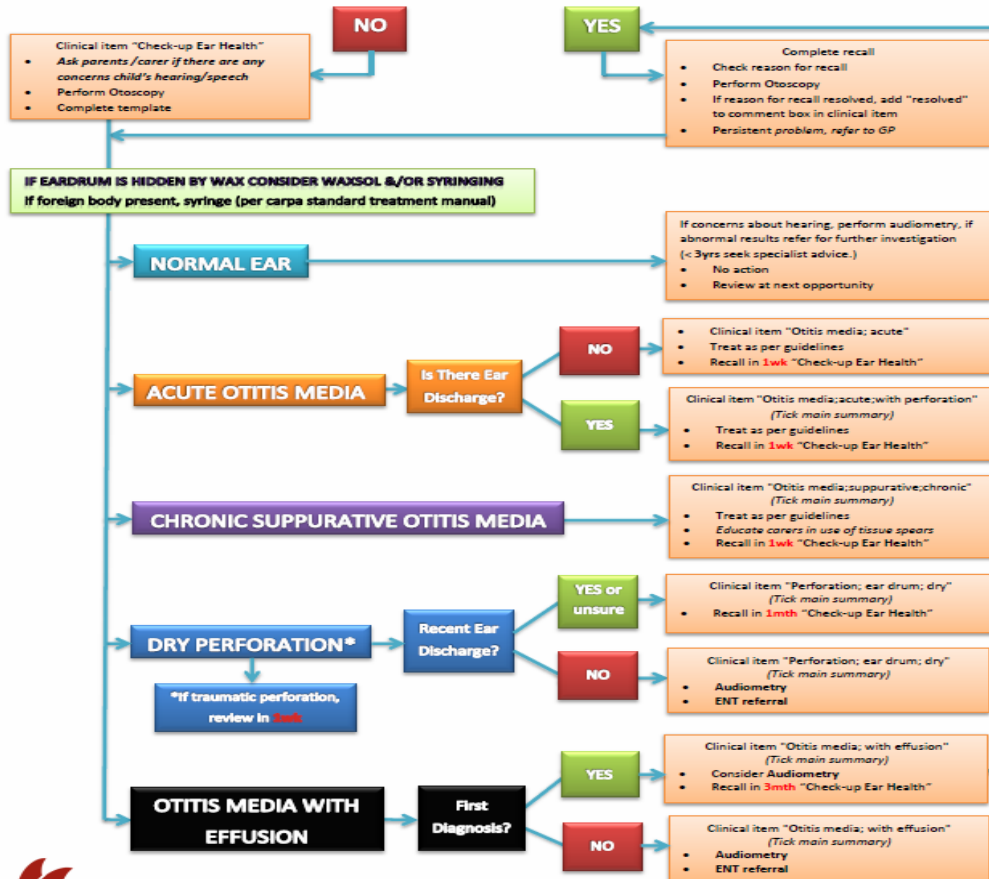
A team approach

- Data entry consistency needs training and also confidence in findings
- Awareness of resources such as the AHCSA Ear Health Communicare manual and flow chart
- The manual guides use of the Ear health quick tab and the Flow chart shows a system for follow-up
- Importance of being accessible and understandable to all staff (regardless of model of care)
- Potential for better data, but also for improvements in management by using a systematic approach as well



CHILD PRESENTS FOR ANY REASON SHOULD HAVE AN EAR HEALTH CHECK

IS THERE AN ACTIVE RECALL FOR "CHECK-UP EAR HEALTH"?



Consistent data entry

- “Otoscopy Left/Right Ear” qualifier has predefined options and this is used in the *Check up; Aboriginal & TSI child* and *Check up; ear health*
- Can’t capture free text in reporting

Check up; ear health
Christine Ellison, Millennium Health Service (Aboriginal Health Service) 18/05/2015 11:22 am

Comment Display on Main Summary
 Display on Obstetric Summary

Performed date 18/05/2015

Otoscope image left ear (No previous values)

Otoscopy left ear (No previous values)

Otoscope image right ear (No previous values)

Otoscopy right ear (No previous values)

Tympanometry left ear (No previous values)

Tympanometry right ear (No previous values)

Tympanometry notes (No previous values)

Viewing right: Common



Check up:Aboriginal & TSI child

The Medicare item for **Aboriginal and Torres Strait Islander** people's health assessment should be claimed when this health assessment is complete.

Christine Ellison, Millennium Health Service (Aboriginal Health Service) 18/05/2015 11:22 am

Dental hygiene/access to dental services (No previous values)

The history recorded is appropriate for the age of the child.

Mandatory history complete (No previous values)

Mandatory Examination

In examining the patient, the practitioner should consider the following age appropriate matters.

Height cm (09/03/2012 168 cm)

Weight kg (09/03/2012 68 kg)

Click in the BMI box to automatically calculate from last recorded weight and height.

BMI kg/m2 (09/03/2012 24.1 kg/m2)

Otoscopy left ear (No previous values)

Otoscopy right ear (No previous values)

Audiometry Degree Left (No previous values)

Audiometry Degree Right (No previous values)

Dental assessment (No previous values)

The examinations performed are appropriate for the

Mandatory examinations complete (No previous values)

Optional Examination

Optional matters in accordance with national or regional guidelines or specific regional needs, or as indicated by a previous child health assessment, where age appropriate.

Hb (Haemoglobin) g/L (No previous values)

Pulse rate bpm (09/03/2012 72 bpm)

Trachoma check performed (No previous values)

Trachoma test result: left eye (No previous values)

Trachoma test result: right eye (No previous values)

Skin Assessment (No previous values)

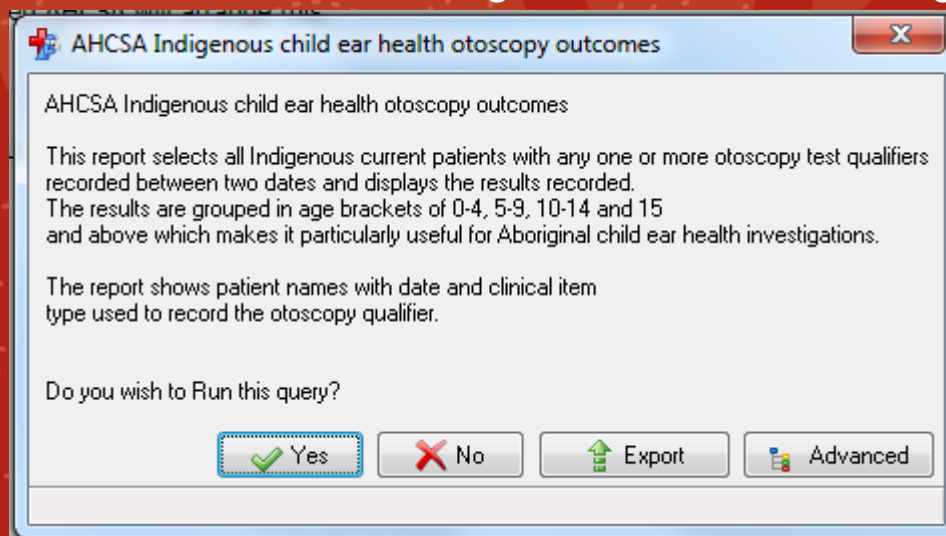
Respiratory examination completed (No previous values)

Cardiac auscultation (No previous values)

Viewing right: Common

Overcoming reporting difficulties

- SQL custom reports
- Capture Indigenous status and a range of clinical items together



Considerations for services

- Most useful way of obtaining information
- Centralised data collection and reporting (ie AHCSA) on a regular basis
- Instructions for services to produce reports on Ear Health indicators
- Both options
- Any priority groups or other considerations that would be useful to capture in reporting – e.g. Young children with discharging ears